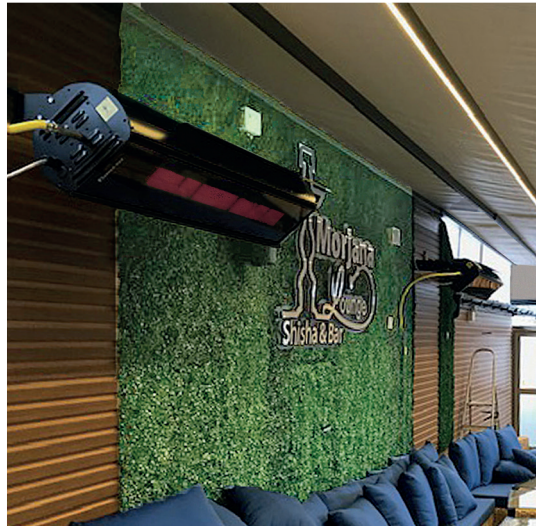


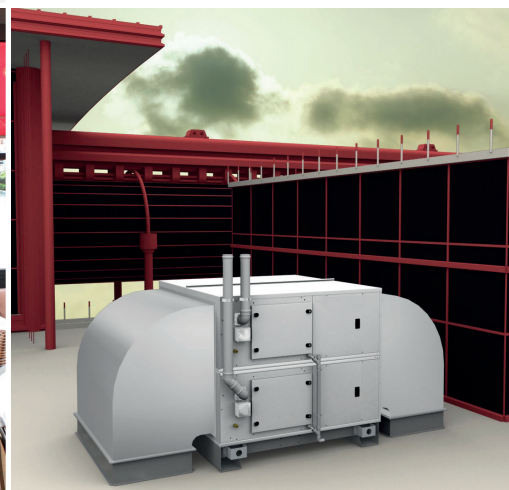
# Product Overview



*Bespoke  
solutions  
made easy*



*Innovation  
in design*



# Introduction

## About us

At Space-Ray, commercial/industrial comfort is a challenge we take seriously. We have been manufacturing gas-fired infrared heating systems since 1949. The quality and performance of our heaters are based on over 70 years of field experience and exposure to industrial heating problems.

Our reputation is built upon a solid track record for providing highly radiant efficient, easy to install and high-quality infrared heating equipment.

We take pride in our entire family of commercial heating products and our commitment to quality standards in the design, manufacture, and performance of Space-Ray heaters — heaters with low maintenance at a competitive price, and a proven record for long life.



---

## Who we are

---

- Global headquarters in Charlotte, North Carolina
- 150+ Employees
- Family owned business
- European operations based in Ipswich, UK

---

## What we do

---

We are a global manufacturer and supplier of HVAC equipment for the industrial, commercial and agricultural markets

We strive to not only meet our customers expectations, we look to exceed them.

Our company values define our product and customer focus

---



Space-Ray offers a five year parts warranty\* on the models that carry the logo on the left.

\*Terms and conditions apply, available upon request.

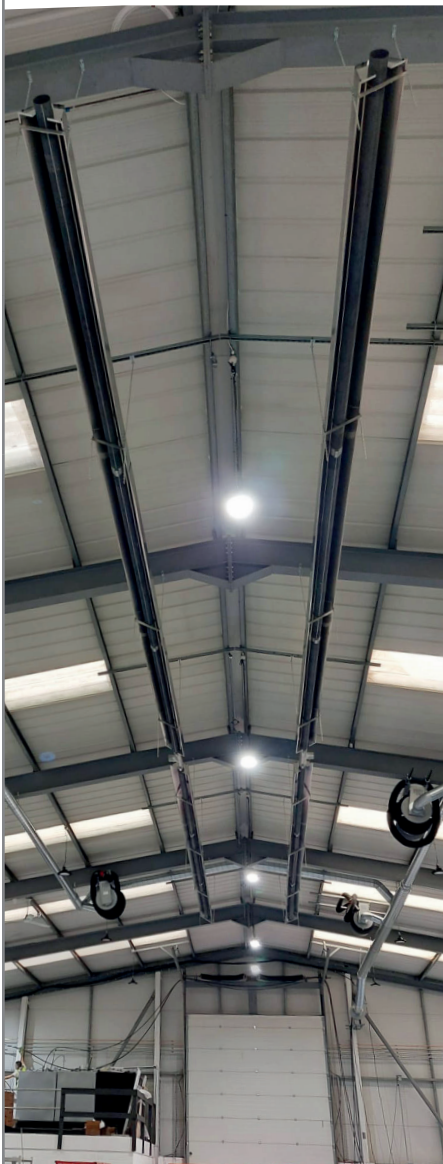
# Gas Fired Radiant Heaters

## Radiant heating

Radiant heating systems can be used to provide spot, localised or complete heating solutions for open areas. Radiant energy emitted from the tube, warms floors and other objects in the area, but not the air

This form of heating maintains warmth even when a large volume of cold air is suddenly introduced, such as in maintenance garages.

Space-Ray offers a wide range of radiant heaters for use with gas or electricity.



## LRU U Tube Heater



U Tube heaters offer uniform heat distribution utilising heat treated aluminised calorised emitter tube surface for a flake free and cleaner working environment.

Aluminium reflectors are designed to maximise downward radiant heating effect.

- 6 Models available
- 15 to 47kW input
- 3.1m to 8.5m long
- Natural gas or LPG

## LRL Linear Tube Heater



Linear Tube heaters offer heat distribution over longer lengths, utilising heat treated aluminised calorised emitter tube surface for a flake free and cleaner working environment.

Aluminium reflectors are designed to maximise downward radiant heating effect

- 6 Models available
- 15 to 47kW input
- 5.5m to 16m long
- Natural gas or LPG

## LRDL Double Linear Tube Heater



Double linear models are two linear heaters using a single flue exhaust fan. This gives double the heat output and coverage from a single flue appliance.

Performance and features from the LRL linear models are present in the LRDL.

- 6 Models available
- 30 to 94kW input
- 11m to 32m long
- Natural gas or LPG

## LRU Herringbone Tube Heater



Herringbone models allow flue connections to be manifolded together so only a single flue outlet is needed.

Greater coverage can be achieved with improved performance.

- 6 Models available
- 15 to 47kW input
- 3.1m to 8.5m long
- Natural gas or LPG

# Gas Fired Radiant Heaters

## LRL

### Herringbone Tube Heater



Herringbone models allow flue connections to be manifolded together so only a single flue outlet is needed.

Greater coverage can be achieved with improved performance.

- 6 Models available
- 15 to 47kW input
- 3.1m to 8.5m long
- Natural gas or LPG

## ADU

### U Tube Heater



ADU Tube heaters offer higher efficiencies, utilising heat treated aluminised calorised emitter tube surface for a flake free and cleaner working environment.

Aluminium, dual reflectors are designed to maximise downward radiant heating effect.

- 5 Models available
- 23 to 47kW input
- 5.4m to 7.0m long
- Natural gas or LPG

## ADL

### Linear Tube Heater



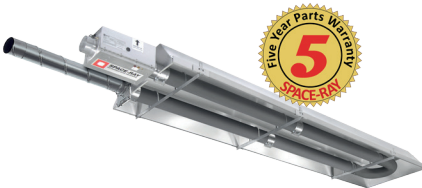
ADL Tube heaters offer higher efficiencies, utilising heat treated aluminised calorised emitter tube surface for a flake free and cleaner working environment.

Aluminium, dual reflectors are designed to maximise downward radiant heating effect.

- 5 Models available
- 23 to 47kW input
- 10.0m to 13.0m long
- Natural gas or LPG

## ADU

### Herringbone Tube Heater



Herringbone models allow flue connections to be manifolded together so only a single flue outlet is needed.

Greater coverage can be achieved with improved performance.

- 6 Models available
- 15 to 47kW input
- 3.1m to 8.5m long
- Natural gas or LPG

## ADL

### Herringbone Tube Heater



Herringbone models allow flue connections to be manifolded together so only a single flue outlet is needed.

Greater coverage can be achieved with improved performance.

- 6 Models available
- 15 to 47kW input
- 3.1m to 8.5m long
- Natural gas or LPG

## EPA-U

### U Tube Heater



EPA U Tube heaters are 'push through' models, where the exhaust fan and burner are contained in a single enclosure making installer connections simpler.

- 8 Models available
- 12 to 53kW input
- 3.8m to 9.9m long
- Natural gas or LPG
- High low burner
- IP55 and stainless steel control box available for use in harsh environments

# Gas Fired & Electric Radiant Heaters

## EPA-L Linear Tube Heater



EPA Linear Tube heaters are 'push through' models, where the exhaust fan and burner are contained in a single enclosure making installer connections simpler.

- 8 Models available
- 12 to 53kW input
- 5.0m to 21.7m long
- Natural gas or LPG
- High low burner
- IP55 and stainless steel control box available for use in harsh environments

## Girad Single Burner Continuous



Girad is a single burner continuous radiant heating system. The wide range of fittings, and long system lengths, enables the installer to ensure maximum heat coverage is achieved.

Burner can be mounted outside of the space being heated.

- 14 Models available
- 50 to 300kW input
- Tube length up to 324m
- Natural gas, LPG or oil
- Modulating burner

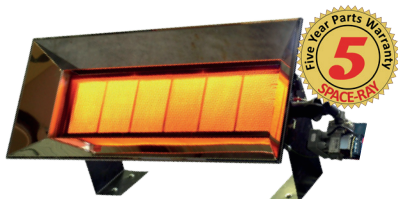
## Cold Blocker Ceramic Infra-red Heater



Cold Blocker is a gas fired high intensity ceramic radiant heater with a glass front. The sleek smooth design finished with the flat glass front helps make this model rain-proof (IP44) and is ideal for leisure areas requiring spot heating.

- 10kW input
- High low burner
- Remote control as standard
- Natural gas or LPG
- Marine grade stainless steel version available

## SRP Ceramic Infra-red Heater

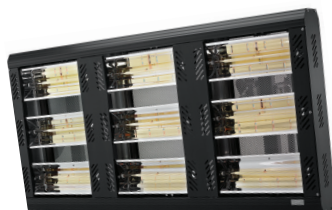


SRP is a gas fired high intensity ceramic radiant heater. Stainless steel construction provides a robust and damage resistant body.

Four models provide a flexible range for complete or spot heating applications.

- 4 Models available
- 7.6 to 30kW input
- Natural gas or LPG version available on models 15 & 30
- Natural gas only available on models 08 & 22

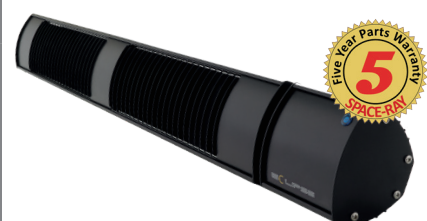
## Apollo Electric Radiant Heater



Utilising quartz full shortwave heating emitters, provides high intensity radiant heat that makes this range perfect to heat warehouses, places of worship, gymnasiums, aircraft hangars, factories etc, when electricity is the only form of energy available.

- 8 Ranges
- 30 Models available
- 1kW to 18kW Output
- Single and three phase models

## Eclipse Electric ceramic heater



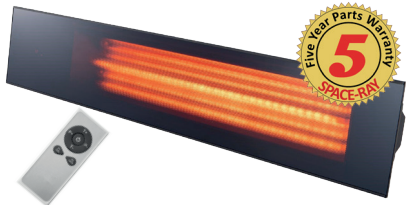
Eclipse is the zero glare electric infrared heater by Space-Ray. Constructed from black powder coated material, its modern sleek design will allow it to fit easily into environments, especially those where heater glare is not desired.

- 3 Models available
- 1.5 to 3.0kW output
- Ceramic heating element
- Zero glow
- Discreet heater with comfort heat performance

# Electric & LTHW Radiant Heaters

## Linea

### Electric Glass Front Heater



Linea is the ultimate seamless slimline designed electric radiant heater. Most of the electrical energy produced is turned into infrared heat, this is due to the high end precision engineering of the product together with the performance of the top of the range ultra-low glare heating elements.

- 2.4kW output
- Remote control with dimmer and timer functions
- Sleek and stylish black glass finish

## Panel

### Electric Flat Panel Heater



The panel heater has a special frameless design which is the exact size required to fit effortlessly into suspended office ceilings and is therefore the perfect solution for discreet and zonal office heating whilst saving space.

- 3 Models available
- 600 x 600mm, 600 x 900mm and 600 x 1200
- Wall or ceiling mounted
- Gentle form of heat
- Remote control option

## SURA Plus

### Electric Halogen Heater

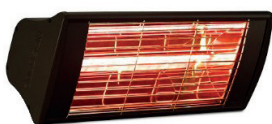


SURA Plus are short wave heaters which are more efficient for outdoor heating and spot heating, due to their nature of travel through air. By this method, a smaller capacity heater can achieve more effective heating.

- 2 Models available
- 1.2 to 2kW and 2.4 to 4kW
- Remote control as standard
- Five power levels using the hand remote
- IP55 protection

## SURA

### Electric Halogen Heater



SURA are short wave heaters which are more efficient for outdoor heating and spot heating, due to their nature of travel through air. By this method, a smaller capacity heater can achieve more effective heating.

- 2 Models available
- 2kW and 4kW outputs
- Available in black finish
- IP55 protection

## SRS

### LPHW Radiant Strip Heater



SRS is a LPHW fed radiant strip heating system ideal for open areas where connection to an existing boiler system is required.

Each system is designed to suit the application and can even be sized to operate on low water temperature projects such as heat pumps etc.

# Gas Fired Warm Air Heaters

## Warm air heating

Warm air heating systems provide a quick and effective solution for open areas that require total heating, with the added benefit of fan ventilation during the summer.

Space-Ray offers a wide range of warm air heaters to suit most applications from high efficiency low NOx condensing models with EC fans for fully ducted applications, through to compact suspended free blowing models.

Complimented by a range of accessories (flue, controls, fixing kits etc) and destratification fans, Space-Ray can help meet your warm air needs.



## SUH-S+ Warm Air Heater



The SUH-S+ range of warm air heaters are a compact range of suspended warm air heaters fitted with low NOx modulating burner and stainless steel heat exchanger as standard.

Control is via one of two controller options, both only requiring two cables to connect to the heater.

- 9 Models available
- 12.5 to 106kW output
- Natural gas or LPG

## SUH-DC Condensing Warm Air Heater



The SUH-DC range of warm air heaters are a high efficiency (up to 107% ncv) condensing range of suspended warm air heaters fitted with low NOx modulating burner and stainless steel heat exchanger as standard.

Control is via one of two controller options, both only requiring two cables to connect to the heater.

- 9 Models available
- 12 to 116kW output
- Natural gas or LPG

## SUH-DCE Condensing Warm Air Heater



The SUH-DCE range of warm air heaters are a high efficiency (up to 107% ncv) condensing range of suspended warm air heaters fitted with low NOx modulating burner, stainless steel heat exchanger and EC supply air fan as standard.

Control is via one of two controller options, both only requiring two cables to connect to the heater.

- 9 Models available
- 12 to 116kW output
- Natural gas or LPG

## AH Condensing Heating and Ventilation Unit



The AH range of warm air heaters are a high efficiency (up to 108% ncv) condensing range of horizontal heating and ventilation units fitted with low NOx modulating burner, stainless steel heat exchanger and EC supply air fan as standard.

- 7 Models available
- 34 to 389kW output
- Natural gas or LPG
- Internal or external models
- Freeblowing or fully ducted

# Warm Air Heating

## Zephyr

### Warm Air Cabinet Heater



The Zephyr range of cabinet heaters combine innovative design with proven heat exchanger technology and EC plug fan to provide, a high efficiency, cost effective heating solution.

- 34 to 389kW output
- Natural gas, LPG or Oil
- Modulating gas burner
- Internal or external models
- Vertical or horizontal models
- Freeblowing or fully ducted

## AH

### Condensing Heating and Ventilation Unit



The AH range of warm air heaters are a high efficiency (up to 108% ncv) condensing range of vertical heating and ventilation units fitted with low NOx modulating burner, stainless steel heat exchanger and EC supply air fan as standard.

- 7 Models available
- 34 to 389kW output
- Natural gas or LPG
- Internal or external models
- Freeblowing or fully ducted

## SWH

### LPHW Warm Air Heater



SWH is a range of suspended LPHW fed warm air heaters ideal for open areas where connection to an existing boiler system is required.

There are three ranges, SWH, SWH-EC (fitted with EC supply air fan) and SWH-LT (designed for low temperature water supply such as heat pumps).

- 9 Models available (SWH)
- 7 Models (SWH-EC)
- 4 Models (SWH-LT)

## Cyclone

### Air Rotation Unit



Air rotation units are ideal for large applications requiring frost protection or constant background temperatures such as distribution centres and warehouses.

The system provides even heating throughout large areas and eliminates the requirement for ductwork or de-stratification fans.

## SD

### Destratification Fan



Destratification fans are located at roof level within a building and automatically return the warm air gathered within the roofspace to low level via the fitted stat, reducing running costs by up to 15%.

Incorporated as an integral part of a warm air heating system, SD fans ensure optimum air distribution in both new and existing buildings.

- Four sizes available + EC fan version
- 3300m<sup>3</sup>/h to 10000m<sup>3</sup>/h

## SR

### Ceiling Fan



SR Destratification fans operate in the same way as the SD range, the main differences being these fans are manually operated via a controller mounted at low level.

Unlike the SD model, direction of air movement from the SR fans is not adjustable.

- Single model
- 13000m<sup>3</sup>/h
- Black or white versions



# Warm Air Heating

## SR-AMC

### Ambient Air Curtain



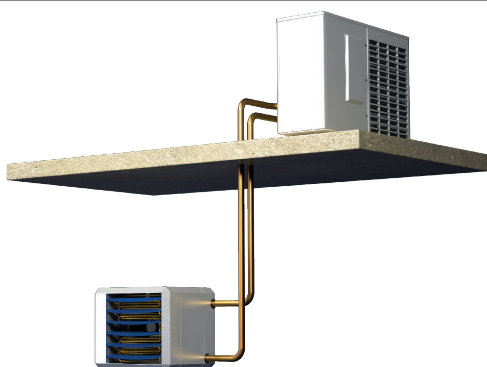
Warehouse, retail premises, factories and workshops are all subject to the issues caused by permanent or frequently opened doors.

A correctly sized air curtain can reduce heat losses by as much as 80%.

Ambient models takes air within the building and creates a wall of air across the door opening without the need for additional heat.

## SHE

### Hybrid with Electric Boost



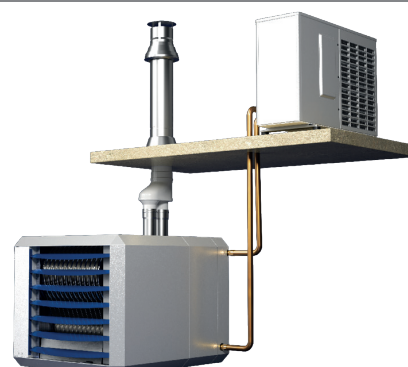
The SHE Hybrid Heater operates completely on electricity.

This model comprises of a heat pump, electric booster and smart controller.

The booster heater is the proven SUH-E with a water to air heat exchanger fitted into the extended heater casing. An EC fan is fitted as standard to maximise energy savings.

## SHG

### Hybrid with Gas Boost



The SHG Hybrid Heater operates on a combination of electricity and gas.

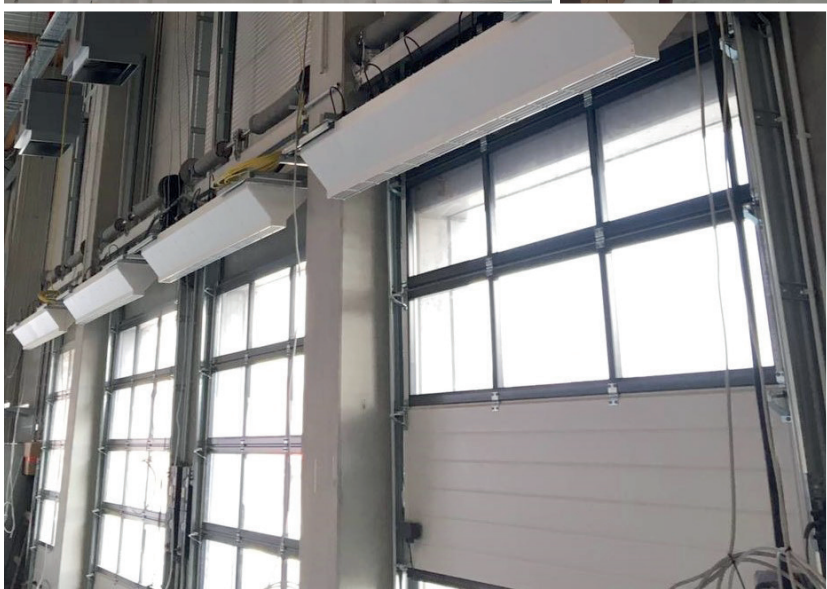
This model comprises of a heat pump, gas fired booster and smart controller.

The booster heater is the proven SUH-S+ with a water to air heat exchanger fitted into the extended heater casing. An EC fan is fitted as standard to maximise energy savings.

# Example Radiant Heating Installations



# Example Warm Air Heating Installations





**Gas Fired Products (UK) Ltd**  
Chapel Lane  
Claydon, Ipswich  
Suffolk, IP6 0JL  
Tel: +44(0)1473 830 551  
[www.spaceray.co.uk](http://www.spaceray.co.uk)  
[info@spaceray.co.uk](mailto:info@spaceray.co.uk)



**FACTORIES: IPSWICH, ENGLAND - CHARLOTTE, N.C, U.S.A**