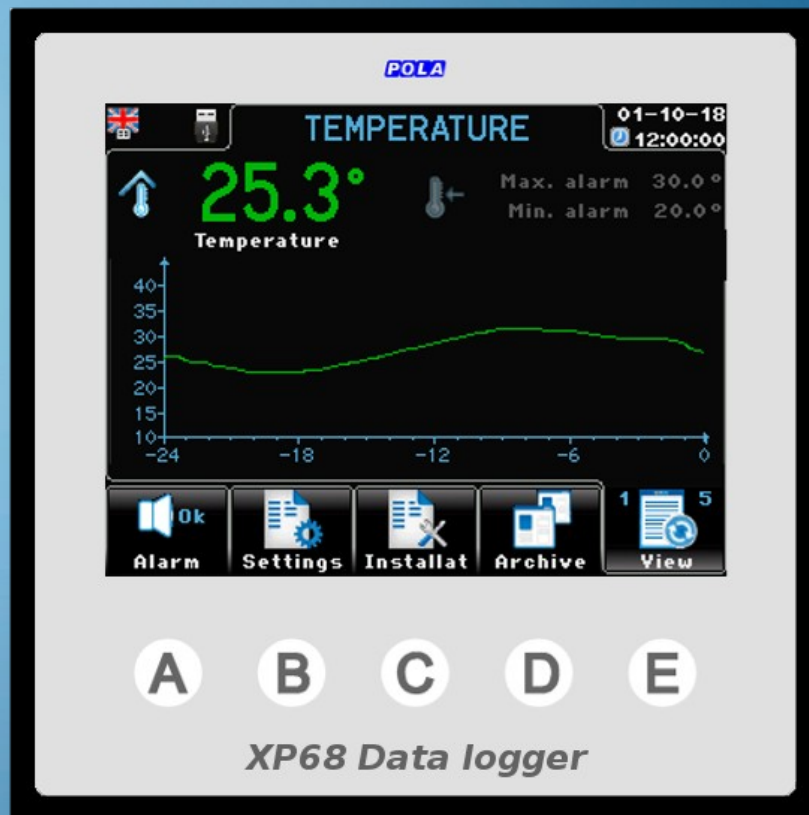


XP line
small size, great power



XP38 data logger

Main feature

The main feature of the XP68 is the color display screen (3.5") with 320x240 dots resolution with led backlighting. XP68 is made in DIN 96x96 format and the module dimensions are 96x96mm.



The user interface is easy and friendly. The easy touch screen system gives both the typical "easy to use" approach of a touch screen system and the strength and mechanical protection of a polycarbonate IP54 keyboard.

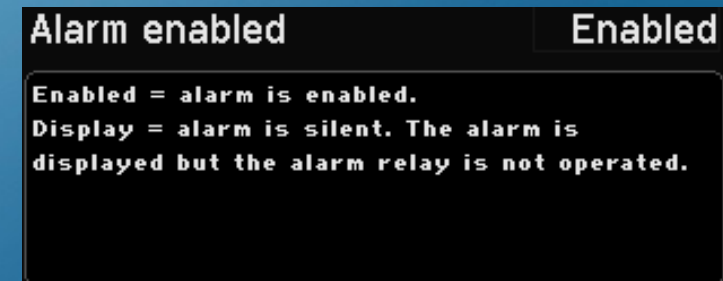


At every screen the function keys display a different graphic making the program very user friendly.

The user can select the display language: all the wordings, acronyms and "help" texts for programming assistance will be displayed in the chosen language.



Each programming step has its own help screen so the program has a "built in" instruction manual.



Data logger

temperature

outside temperature

ammonia

carbon dioxide

humidity

POLA

TEMPERATURE 01-10-18 12:00:00

25.3°

Temperature

Max. alarm 30.0°

Min. alarm 20.0°

Alarm Settings Installat Archive View

A B C D E

XP68 Data logger

AMBIENT ARCHIVE 01-10-18 12:00:00

01-10-18

Archive date

	Min	Media	Max
Temperature	24.0°	25.0°	26.0°
Humidity	60%	70%	80%
CO2	1500p	1600p	1700p
NH3	2.0p	3.0p	4.0p
Outside temperature	7.0°	8.0°	9.0°

Exit Graphics Daily reg. Day (-) Day (+)

TEMPERATURE 01-10-18 12:00:00

01-10-18

Cycle Day

Humidity Day (-) Day (+)

CYCLE TEMPERATURE 01-10-18 12:00:00

01-10-18

Humidity

Maximum

Medium

Minimum

XP68 is a data logger for recording the following parameters:

- Ambient temperature
- Ambient humidity
- AmbientCO2
- AmbientNH3
- External temperature

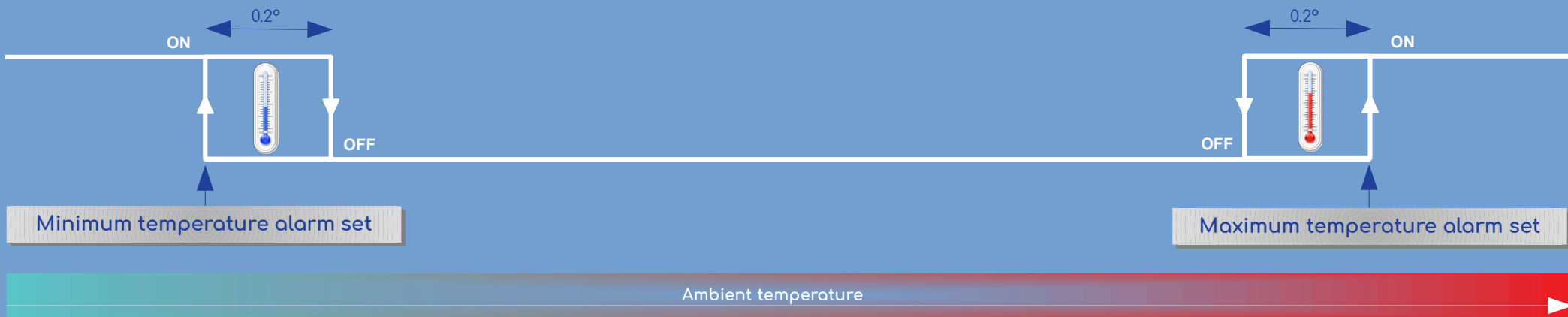
The daily archive records for each parameter:

- Minimum / average / maximum values for a maximum of 1000 days
- For each day, 96 values are recorded with a frequency of 15 minutes

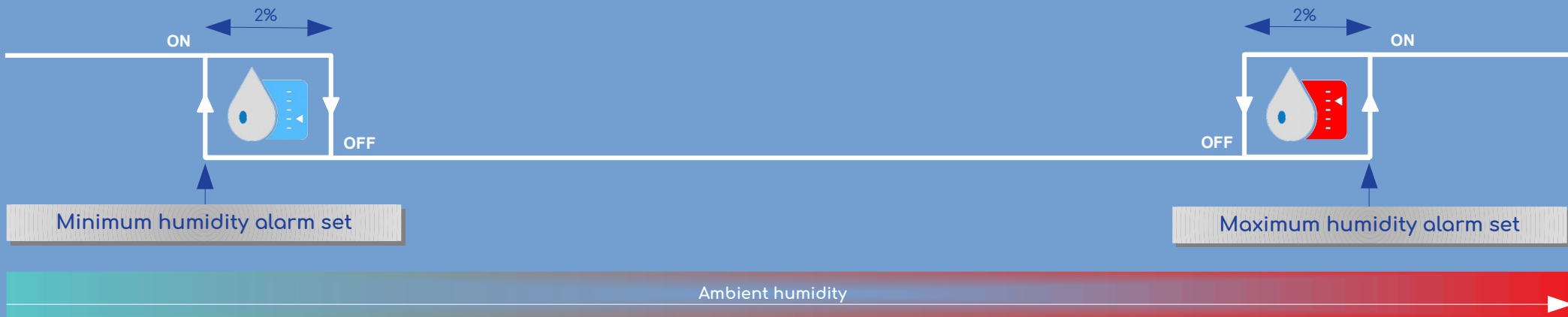
The recordings can be conveniently exported to USB memory and thanks to the online service XP Dialogue displayed in various formats directly on personal computers or other devices.

Temperature and humidity alarm operation diagrams

Temperature alarm



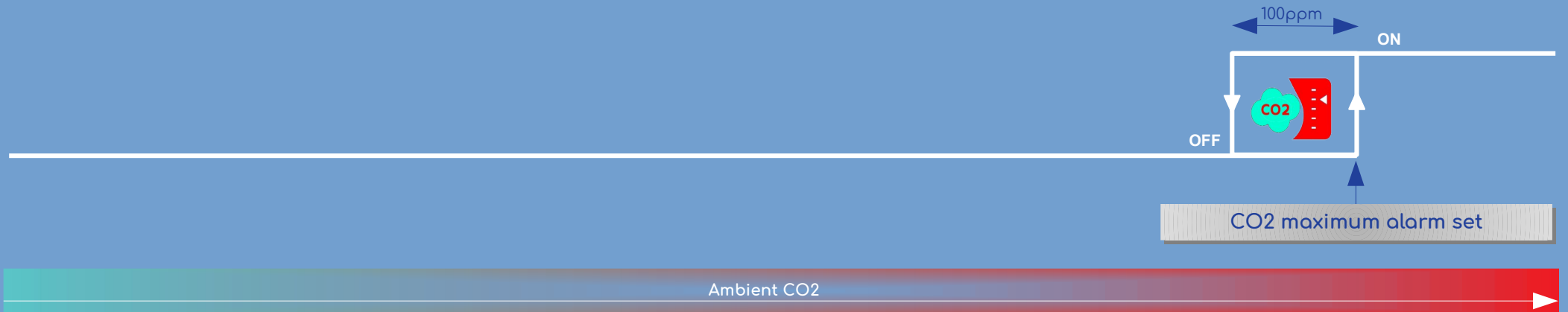
Humidity alarm



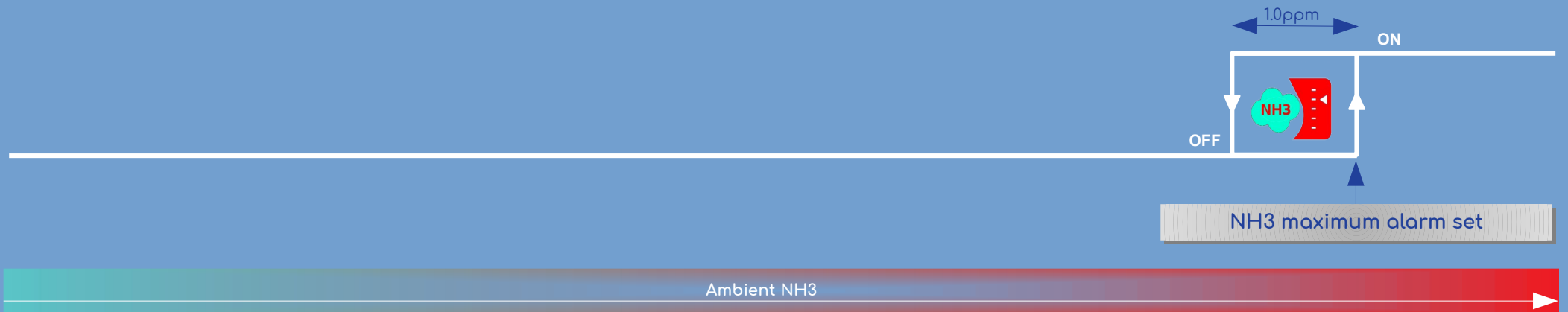
In addition to the general alarm signal for exceeding one of the controlled parameters (Temperature, Humidity, CO₂, NH₃), an alarm signal is also available for each controlled parameter that allows to interact with the ventilation / air-exchange system in the case of exceeding the maximum alarm values set.

CO2 and NH3 alarm operation diagrams

CO2 alarm

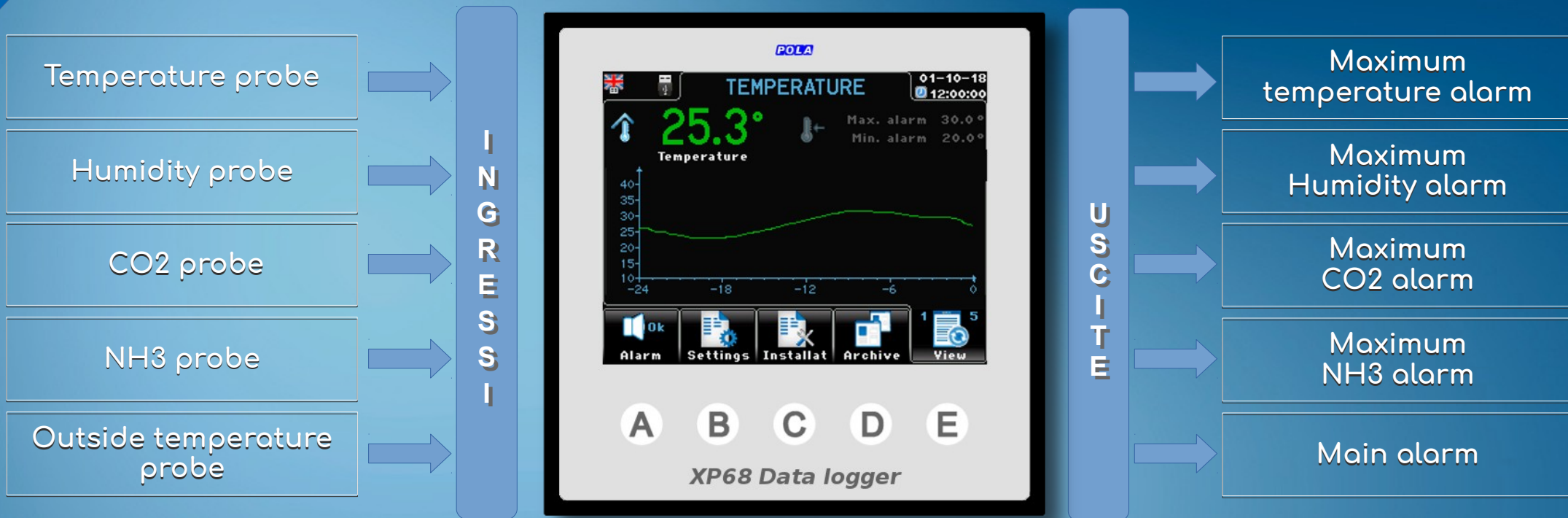


NH3 alarm



In addition to the general alarm signal for exceeding one of the controlled parameters (Temperature, Humidity, CO2, NH3), an alarm signal is also available for each controlled parameter that allows to interact with the ventilation / air-exchange system in the case of exceeding the maximum alarm values set.

Inputs and outputs



Other available connections

- **USB plug**
XP68 has a USB plug on the back.
When selecting the USBP option you can get a USB plug with a (IP65) protection cap externally mounted so you can access the USB without having to go to the back of the unit.
- **XNET**
Network connection card (optional) for XP68 processor ([see remote supervision](#)).

Sensor Choice

Ambient temperature



SX

Temperature probe

Outdoor temperature



SX

Temperature probe

Humidity



WT1

Psychrometric kit dry bulb and wet bulb
for humidity control.

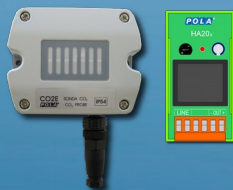
In this case the ambient temperature probe is not to be
ordered as it is already included

Or



RHR + HA20s
Humidity probe 0..100%
+ power supply

CO2



CO2E + HA20s

Carbon dioxide probe 0...10.000ppm
+ power supply

NH3



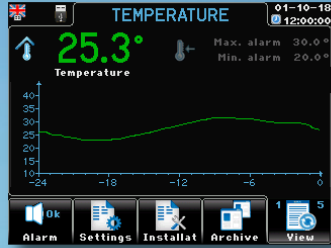
NH3D + HAR5

Ammonia probe 0... 100ppm
+ power supply

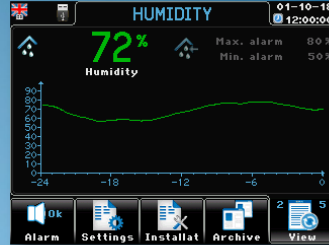
Sample screenshots



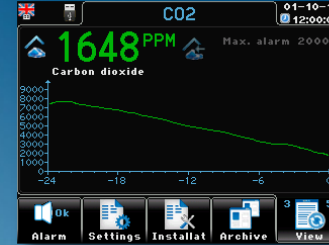
Home
Viewing screens



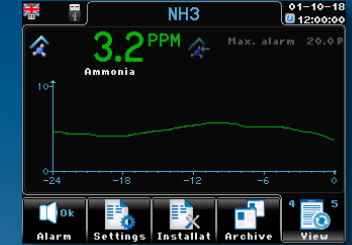
Viewing temperature



Viewing humidity



Viewing carbon dioxide



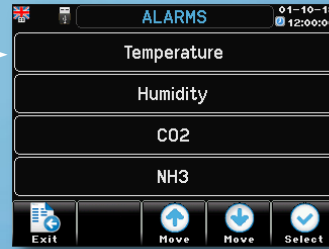
Viewing ammonia



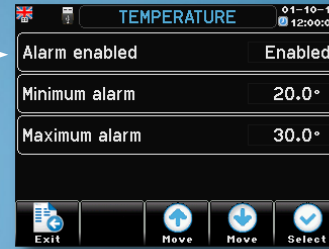
Settings
Settings screens



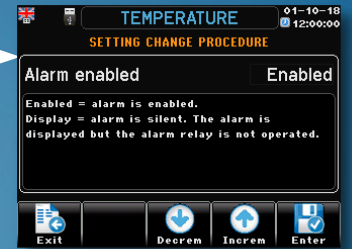
Settings



Alarm setting selection



alarm setting



alarm enable/silent setting



Archive
Archive screen



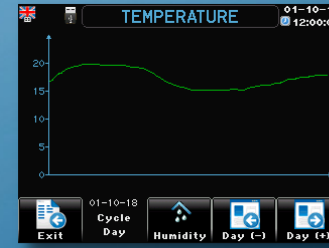
Archive viewing selection

AMBIENT ARCHIVE 01-10-18 12:00:00
01-10-18
Archive date

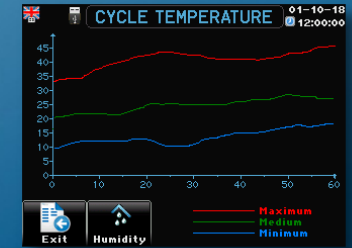
	Min	Media	Max
Temperature	24.0°	25.0°	26.0°
Humidity	60%	70%	80%
CO2	1500p	1600p	1700p
NH3	2.0p	3.0p	4.0p
Outside temperature	7.0°	8.0°	9.0°

Exit Graphics Daily reg. Day (-) Day (+)

Ambient daily archive

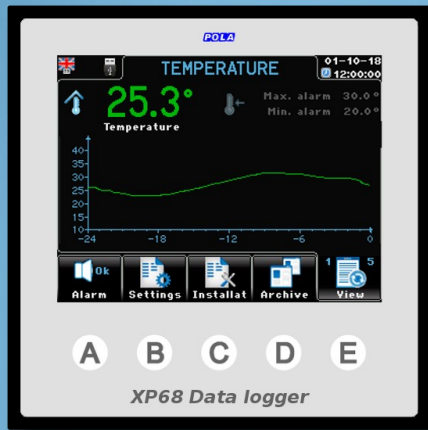


Daily temperature chart



Cycle temperature chart

Data transfer

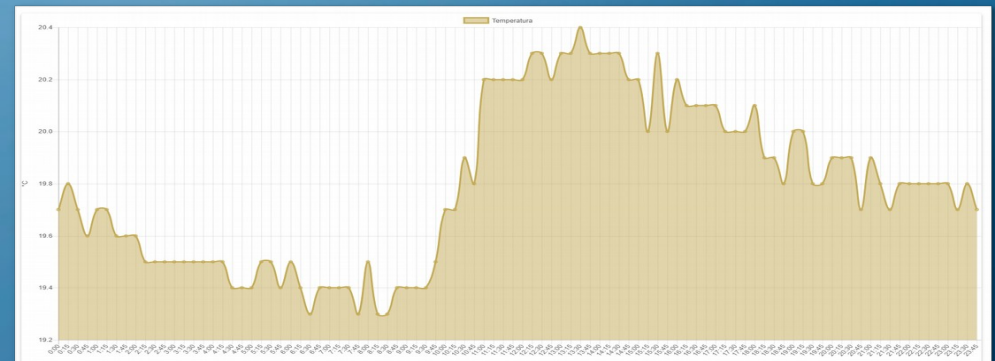


The communication with the outside world is performed by USB key.

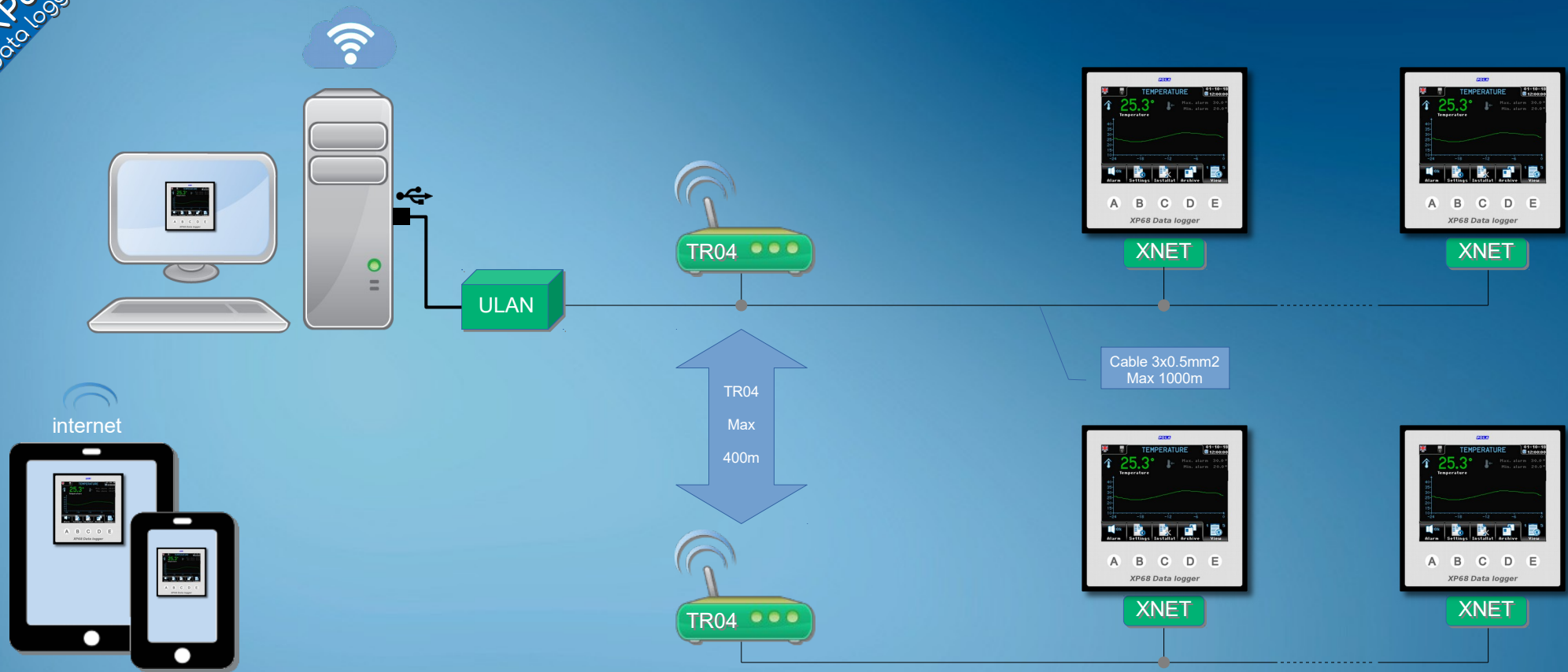
- **Export archives**
XP68 save in the USB memory a file containing all the day by day recorded data of the cycle.
Connecting the USB key to a PC and by using the on-line XP Dialogue service you can browse the recorded data in grid or graph formats.
- **Importing / saving the setting**
You can save a file with all back-up infos on a USB file.
Saved settings can be uploaded on XP68 anytime by a user friendly procedure.

XP Dialogue on line service example

XP68			
Giornalieri	04-11-2018		
Totale			
Eventi			
Allarmi			
Temperatura minima	Temperatura media	Temperatura massima	
19.3°	19.7°	20.4°	
Umidità minima	Umidità media	Umidità massima	
91Rh	93Rh	96Rh	
CO2 minima	CO2 media	CO2 massima	
0ppm	0ppm	0ppm	
NH3 minima	NH3 media	NH3 massima	
0.0ppm	0.0ppm	0.0ppm	
Esterna minima	Esterna media	Esterna massima	
19.2°	19.5°	19.9°	



Remote supervision



Remote supervision of XP68 processors grants the full management of system by PC.

The XP68 Net Pro supervision software enables the full remote control of network connected processors. ULAN peripheral is connected to PC through a USB connection. XP68 – ULAN connection is done by a simple 3 wires cable. In all cases where ULAN cannot be cabled to XP68 we can supply TR04 radio-modems with a reach of 400 mt.

Components for creating a supervision system:

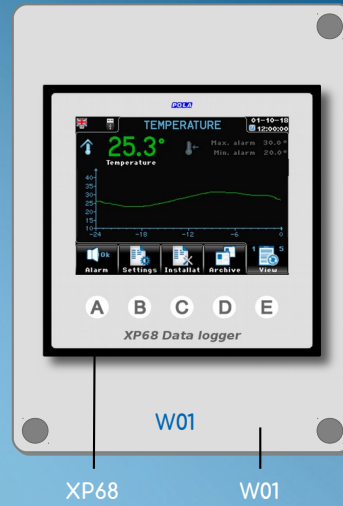
- ULAN: Network server Pc (with USB connection)
- XNET: Network adapter card (one for each XP68)
- TR04: Radio-modem 485 (optional, to be used only when it is not possible to use the cable)

Available options

<i>Model</i>	<i>Description</i>
XP68	Data logger (DIN96 panel mounting)
----- <i>Options</i> -----	
W01	IP54 box for wall mounting + gasket + transparent cover
USBP	USB IP65 external plug (to be mounted externally, for access to the USB without the need to access the back of the XP68)
SX	Temperature probe
WT1	Psychrometric kit dry bulb and wet bulb for humidity control. Includes the SX temperature sensor (so you do not need to order an extra SX when the WT1 kit is installed)
RHR	0...100% humidity probe
CO2E	Power pack for RHR humidity probe
NH3D	Ammonia probe 0... 100ppm
HA20s	Power pack for RHR/CO2E probe
HAR5	Power pack for NH3D probe
XNET	Network nodal point
ULAN	Network server Pc (with USB connection)
TR04	Radio-modem 485 (IP55 junction box with power supply 230/12v)



Available options

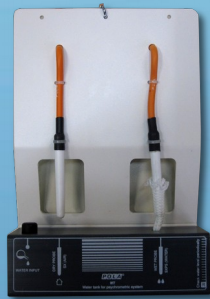


XP68

W01



SX



WT1



RHR



CO2E



NH3D



HA20s



HAR5



ULAN



XNET



USBP



TR04

POLA

www.pola.it

40th

40 YEARS OF INNOVATION